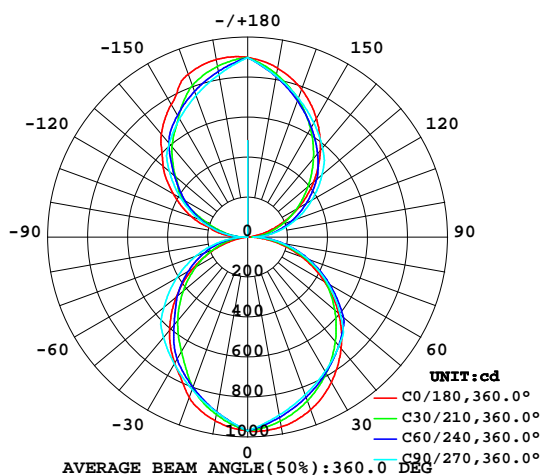


## LUMINAIRE PHOTOMETRIC TEST REPORT

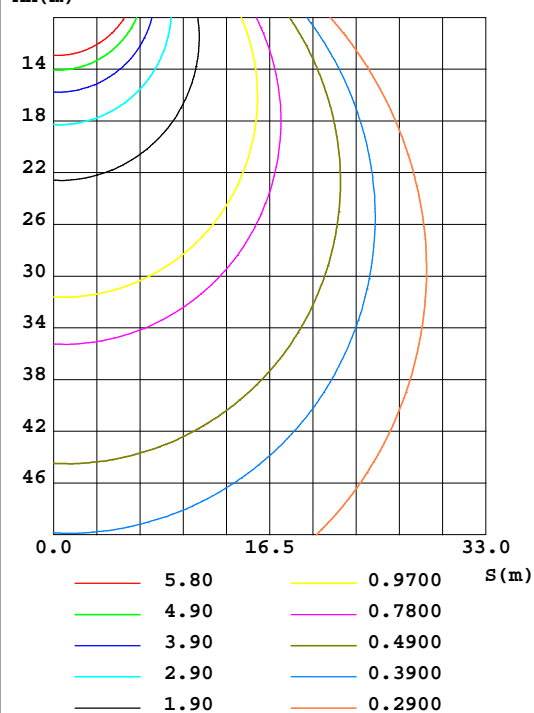
Test:U:121.4V I:0.3230A P:38.80W PF:0.9890 Lamp Flux:4924.07x1 lm					
NAME: 二代线条灯		TYPE: 白色外壳		WEIGHT:	
DIM.: 4FT		SPEC.: 3500K		SERIAL No.: 认证样品	
MFR.: YQ		SUR.: 1.2*0.066m		PROTECTION ANGLE:	

DATA OF LAMP		PHOTOMETRIC DATA Eff: 126.91 lm/W			
MODEL		I <sub>max</sub> (cd)	972.7	S/MH(C0/180)	1.28
NOMINAL POWER(W)	40	LOR(%)	100.0	S/MH(C90/270)	1.20
RATED VOLTAGE(V)	122	TOTAL FLUX(lm)	4924.1	η UP,DN(C0-180)	23.3,27.3
NOMINAL FLUX(lm)	4924.07	CIE CLASS	DIFFUSE	η UP,DN(C180-360)	23.7,25.7
LAMPS INSIDE	1	η up(%)	47.0	CIBSE SHR NOM	1.25
TEST VOLTAGE(V)	121.4	η down(%)	53.0	CIBSE SHR MAX	1.35

LUMINOUS INTENSITY DISTRIBUTION DIAGRAM



C0 PLANE ISOLUX DIAGRAM (UNIT:lx)



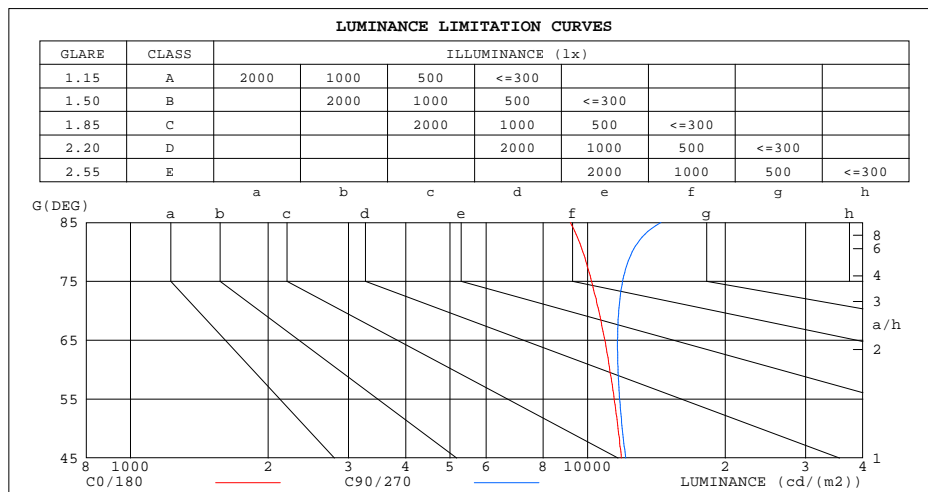
C Range: 0 - 360DEG  
 C Interval: 5.0DEG  
 Test Speed: HIGH  
 Temperature:26.3DEG  
 Operators:Ethan  
 Test Date:2021-10-07

γ Range: 0 - 180DEG  
 γ Interval: 0.5DEG  
 Test System:EVERFINE GO-2000B\_V1 SYSTEM V2.0.268  
 Humidity:36%  
 Test Distance:6.770m [K=1.0000]  
 Remarks: E款 5:5  
 源磊A+档

ZONAL FLUX DIAGRAM  
AND LUMINANCE LIMITATION CURVES

## ZONAL FLUX DIAGRAM:

$\gamma$	C0	C45	C90	C135	C180	C225	C270	C315	$\gamma$	$\phi$ zone	$\phi$ total	$\phi$ lum,lamp
5	972.6	949.5	936.9	938.3	956.7	933.3	930.0	944.7	0- 5	22.79	22.79	0.46,0.46
10	964.7	924.5	904.6	903.1	933.8	893.2	890.7	915.2	5- 10	66.38	89.16	1.81,1.81
15	946.7	894.6	872.4	863.7	902.0	848.4	851.5	881.2	10- 15	106.3	195.4	3.97,3.97
20	919.2	860.9	840.1	820.3	854.4	800.5	812.3	843.3	15- 20	141.5	337.0	6.84,6.84
25	883.5	823.2	807.9	765.3	785.7	737.1	773.1	802.1	20- 25	170.9	507.9	10.3,10.3
30	838.5	782.5	775.6	703.1	730.5	664.4	733.8	758.4	25- 30	194.2	702.1	14.3,14.3
35	786.1	739.3	743.3	646.6	672.8	603.4	694.6	712.6	30- 35	211.7	913.8	18.6,18.6
40	727.7	694.5	711.1	596.3	608.8	549.1	655.4	665.5	35- 40	223.3	1137	23.1,23.1
45	663.5	648.2	678.8	548.2	539.3	497.3	616.2	617.4	40- 45	229.0	1366	27.7,27.7
50	593.9	602.1	606.4	499.7	467.3	444.9	547.8	569.9	45- 50	227.4	1594	32.4,32.4
55	519.4	554.4	534.0	448.9	393.7	392.7	479.4	521.2	50- 55	216.8	1810	36.8,36.8
60	442.9	473.2	461.7	373.8	318.6	329.8	411.0	443.8	55- 60	198.9	2009	40.8,40.8
65	365.2	394.0	389.3	303.0	244.0	269.7	342.6	367.6	60- 65	175.3	2185	44.4,44.4
70	286.6	316.5	316.9	236.1	170.9	212.8	274.3	293.9	65- 70	147.4	2332	47.4,47.4
75	209.1	241.7	244.6	171.9	99.34	159.2	205.9	221.8	70- 75	116.6	2449	49.7,49.7
80	134.3	168.9	172.2	111.9	34.07	108.2	137.5	151.3	75- 80	84.47	2533	51.4,51.4
85	63.25	97.73	99.82	55.43	2.933	59.22	69.12	82.01	80- 85	52.53	2586	52.5,52.5
90	7.104	27.62	27.44	0.7378	13.81	11.36	0.7434	13.38	85- 90	22.22	2608	53.53
95	1.058	70.11	84.76	59.45	100.6	68.54	64.56	59.17	90- 95	20.48	2628	53.4,53.4
100	30.35	113.8	142.1	118.3	160.5	124.3	128.4	106.1	95-100	46.29	2675	54.3,54.3
105	91.46	159.3	199.4	177.8	217.8	179.1	192.2	154.9	100-105	73.51	2748	55.8,55.8
110	155.6	207.5	256.7	238.3	297.6	238.2	256.0	207.0	105-110	101.3	2849	57.9,57.9
115	222.7	258.8	314.0	300.9	364.0	302.2	319.8	262.6	110-115	128.0	2977	60.5,60.5
120	292.2	313.2	371.3	363.5	428.0	364.5	383.7	321.7	115-120	152.2	3130	63.6,63.6
125	362.4	371.0	428.7	423.9	493.4	435.3	447.5	385.1	120-125	172.9	3302	67.1,67.1
130	432.0	420.7	486.0	470.1	552.9	486.2	511.3	434.6	125-130	188.9	3491	70.9,70.9
135	500.3	471.9	543.3	518.8	608.2	531.9	575.1	485.2	130-135	199.0	3690	74.9,74.9
140	566.0	523.2	582.7	564.4	672.5	577.0	611.1	535.9	135-140	202.3	3893	79.1,79.1
145	628.3	575.8	622.2	618.2	722.1	628.8	647.0	587.2	140-145	199.2	4092	83.1,83.1
150	687.7	628.1	661.6	668.7	765.2	690.6	683.0	638.6	145-150	190.4	4282	87.87
155	740.2	679.0	701.0	726.3	821.9	752.1	719.0	687.9	150-155	176.1	4458	90.5,90.5
160	788.2	728.2	740.4	777.8	867.6	790.8	754.9	735.4	155-160	156.1	4615	93.7,93.7
165	826.8	774.6	779.9	814.3	889.6	824.2	790.9	781.0	160-165	129.6	4744	96.3,96.3
170	858.7	819.3	819.3	847.2	901.9	853.8	826.9	823.2	165-170	97.63	4842	98.3,98.3
175	883.3	860.5	858.7	874.7	904.9	879.1	862.8	863.2	170-175	61.20	4903	99.6,99.6
180	898.1	898.1	898.1	898.1	898.8	898.8	898.8	898.8	175-180	21.07	4924	100,100
DEG	LUMINOUS INTENSITY:cd									UNIT:lm		



LUMINANCE cd/(m2)		
G(°)	C0/180	C90/270
85	9162	14460
80	9767	12520
75	10203	11931
70	10580	11700
65	10910	11631
60	11186	11659
55	11433	11756
50	11666	11912
45	11848	12121

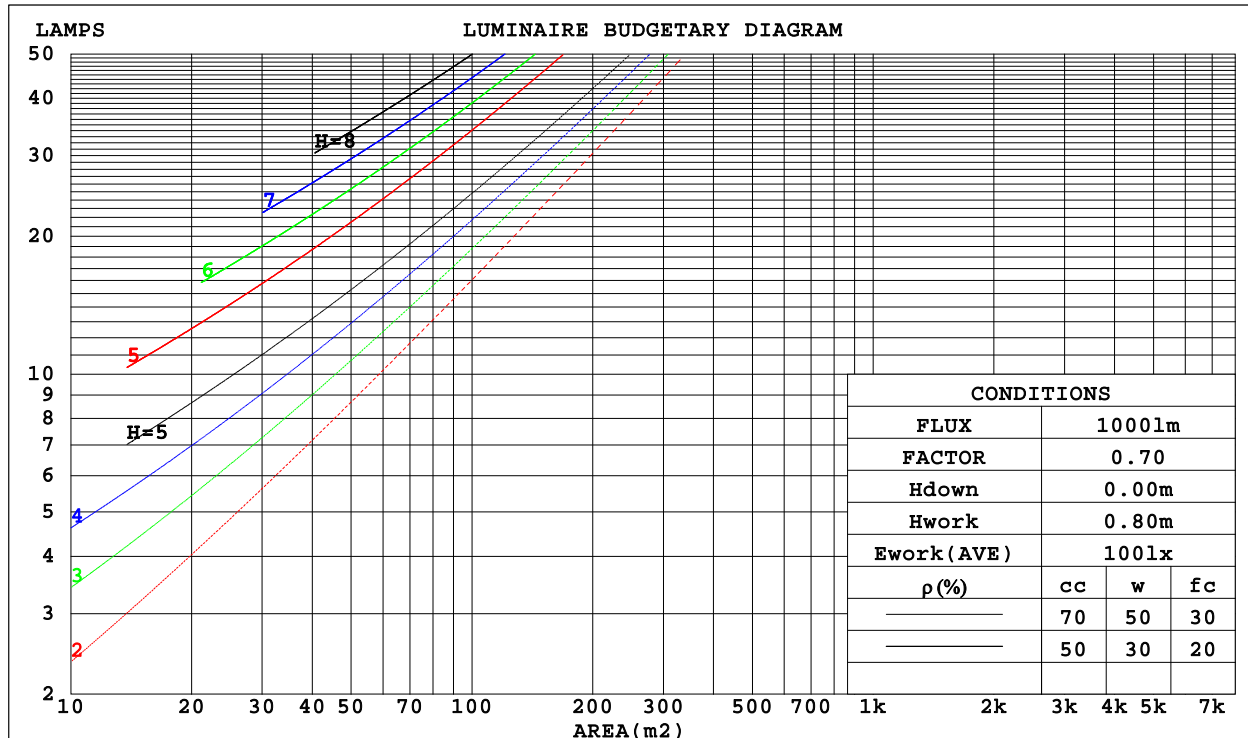
C Range: 0 - 360DEG  
C Interval: 5.0DEG  
Test Speed: HIGH  
Temperature: 26.3DEG  
Operators: Ethan  
Test Date: 2021-10-07

$\gamma$  Range: 0 - 180DEG  
 $\gamma$  Interval: 0.5DEG  
Test System: EVERFINE GO-2000B\_V1 SYSTEM V2.0.268  
Humidity: 36%  
Test Distance: 6.770m [K=1.0000]  
Remarks: E款 5:5  
源磊A+档

## CU AND LUMINAIRE BUDGETARY ESTIMATE DIAGRAM

Test:U:121.4V I:0.3230A P:38.80W PF:0.9890 Lamp Flux:4924.07x1 lm		
NAME: 二代线条灯	TYPE:白色外壳	WEIGHT:
DIM.: 4FT	SPEC.:3500K	SERIAL No.:认证样品
MFR.: YQ	SUR.:1.2*0.066m	PROTECTION ANGLE:

$\rho_{cc}$	80%			70%			50%			30%			10%			0	
$\rho_w$	50%	30%	10%	50%	30%	10%	50%	30%	10%	50%	30%	10%	50%	30%	10%	0	
$\rho_{fc}$	20%			20%			20%			20%			20%			0	
RCR	RCR:Room Cavity Ratio						Coefficients of Utilization(CU)										
0.0	1.08	1.08	1.08	.00	.00	.00	.85	.85	.85	.71	.71	.71	.59	.59	.59	.53	
1.0	.94	.89	.86	.87	.83	.80	.74	.71	.69	.62	.60	.59	.51	.50	.49	.44	
2.0	.81	.75	.70	.75	.70	.65	.64	.60	.57	.54	.51	.49	.45	.43	.41	.36	
3.0	.71	.64	.58	.66	.60	.54	.57	.52	.47	.48	.44	.41	.40	.37	.34	.30	
4.0	.63	.55	.49	.59	.51	.46	.50	.45	.40	.42	.38	.35	.35	.32	.29	.26	
5.0	.56	.48	.42	.52	.45	.39	.45	.39	.35	.38	.34	.30	.32	.28	.26	.22	
6.0	.50	.42	.36	.47	.39	.34	.40	.34	.30	.34	.30	.26	.29	.25	.22	.20	
7.0	.45	.37	.31	.42	.35	.30	.37	.31	.26	.31	.27	.23	.26	.23	.20	.17	
8.0	.41	.33	.28	.38	.31	.26	.33	.28	.23	.29	.24	.21	.24	.20	.18	.15	
9.0	.38	.30	.25	.35	.28	.23	.31	.25	.21	.26	.22	.18	.22	.19	.16	.14	
10.0	.34	.27	.22	.32	.26	.21	.28	.23	.19	.24	.20	.17	.21	.17	.15	.13	



C Range: 0 - 360DEG  
 C Interval: 5.0DEG  
 Test Speed: HIGH  
 Temperature:26.3DEG  
 Operators:Ethan  
 Test Date:2021-10-07

$\gamma$  Range: 0 - 180DEG  
 $\gamma$  Interval: 0.5DEG  
 Test System:EVERFINE GO-2000B\_V1 SYSTEM V2.0.268  
 Humidity:36%  
 Test Distance:6.770m [K=1.0000]  
 Remarks: E款 5:5  
 源磊A+档

## WEC AND CCEC

Test:U:121.4V I:0.3230A P:38.80W PF:0.9890 Lamp Flux:4924.07x1 lm		
NAME: 二代线条灯	TYPE:白色外壳	WEIGHT:
DIM.: 4FT	SPEC.:3500K	SERIAL No.:认证样品
MFR.: YQ	SUR.:1.2*0.066m	PROTECTION ANGLE:

pcc	80%			70%			50%			30%			10%			0
pw	50%	30%	10%	50%	30%	10%	50%	30%	10%	50%	30%	10%	50%	30%	10%	0
pfc	20%			20%			20%			20%			20%			0
RCR	RCR:Room Cavity Ratio                      Wall Exitance Coefficients(WEC)															
0.0																
1.0	.292	.166	.053	.271	.155	.049	.231	.133	.042	.195	.112	.036	.161	.093	.030	
2.0	.270	.148	.045	.251	.138	.043	.214	.119	.037	.181	.102	.032	.150	.085	.027	
3.0	.248	.132	.040	.231	.124	.037	.198	.107	.033	.167	.092	.028	.139	.077	.024	
4.0	.229	.119	.035	.213	.111	.033	.182	.097	.029	.154	.083	.025	.128	.070	.021	
5.0	.212	.108	.031	.197	.101	.029	.169	.088	.026	.143	.075	.022	.119	.063	.019	
6.0	.197	.099	.028	.183	.092	.027	.157	.081	.023	.133	.069	.020	.110	.058	.017	
7.0	.183	.091	.026	.170	.085	.024	.147	.074	.021	.124	.064	.019	.103	.054	.016	
8.0	.171	.084	.024	.159	.079	.022	.137	.069	.020	.116	.059	.017	.097	.050	.014	
9.0	.160	.078	.022	.150	.073	.020	.129	.064	.018	.109	.055	.016	.091	.046	.013	
10.0	.151	.072	.020	.141	.068	.019	.121	.059	.017	.103	.051	.015	.086	.043	.012	

pcc	80%			70%			50%			30%			10%			0
pw	50%	30%	10%	50%	30%	10%	50%	30%	10%	50%	30%	10%	50%	30%	10%	0
pfc	20%			20%			20%			20%			20%			0
RCR	RCR:Room Cavity Ratio			Ceiling Cavity Exitance Coefficients(CCEC)												
0.0	.549	.549	.549	.469	.469	.469	.320	.320	.320	.184	.184	.184	.059	.059	.059	
1.0	.540	.518	.497	.462	.444	.428	.316	.306	.296	.182	.177	.172	.058	.057	.056	
2.0	.533	.496	.464	.457	.427	.401	.313	.295	.280	.180	.172	.164	.058	.056	.053	
3.0	.526	.480	.443	.451	.414	.384	.310	.288	.269	.179	.168	.159	.057	.055	.052	
4.0	.519	.468	.429	.446	.404	.372	.306	.282	.262	.177	.165	.155	.057	.054	.051	
5.0	.513	.459	.419	.440	.397	.364	.303	.277	.257	.176	.163	.153	.057	.053	.050	
6.0	.506	.451	.411	.435	.391	.358	.300	.273	.253	.174	.161	.151	.056	.053	.050	
7.0	.500	.445	.406	.430	.386	.354	.297	.270	.251	.173	.159	.149	.056	.052	.049	
8.0	.494	.440	.402	.426	.381	.350	.294	.268	.249	.171	.158	.148	.055	.052	.049	
9.0	.489	.435	.399	.421	.378	.348	.292	.265	.247	.170	.157	.147	.055	.051	.049	
10.0	.484	.431	.396	.417	.375	.346	.289	.264	.246	.169	.156	.147	.055	.051	.049	

C Range: 0 - 360DEG  
C Interval: 5.0DEG  
Test Speed: HIGH  
Temperature:26.3DEG  
Operators:Ethan  
Test Date:2021-10-07

γ Range: 0 - 180DEG  
γ Interval: 0.5DEG  
Test System:EVERFINE GO-2000B\_V1 SYSTEM V2.0.268  
Humidity:36%  
Test Distance:6.770m [K=1.0000]  
Remarks: E款 5:5  
源磊A+档

## Uncorrected UGR Table

Test:U:121.4V I:0.3230A P:38.80W PF:0.9890 Lamp Flux:4924.07x1 lm											
NAME: 二代线条灯					TYPE:白色外壳			WEIGHT:			
DIM.: 4FT					SPEC.:3500K			SERIAL No.:认证样品			
MFR.: YQ					SUR.:1.2*0.066m			PROTECTION ANGLE:			
ceiling/cavity	0.7	0.7	0.5	0.5	0.3	0.7	0.7	0.5	0.5	0.3	
walls	0.5	0.3	0.5	0.3	0.3	0.5	0.3	0.5	0.3	0.3	
working plane	0.2	0.2	0.2	0.2	0.2	0.2	0.2	0.2	0.2	0.2	
Room dimensions		Viewed crosswise					Viewed endwise				
x = 2H y = 2H	18.5	19.4	19.3	20.3	21.3	19.0	20.0	19.8	20.8	21.8	
	20.0	20.8	20.8	21.7	22.8	20.7	21.6	21.5	22.4	23.5	
	20.6	21.4	21.4	22.3	23.4	21.4	22.3	22.3	23.1	24.2	
	21.0	21.8	21.9	22.7	23.8	22.1	22.9	23.0	23.7	24.9	
	21.2	21.9	22.1	22.8	24.0	22.4	23.1	23.3	24.0	25.1	
	21.3	22.0	22.2	22.9	24.1	22.6	23.3	23.5	24.2	25.4	
4H	2H	19.1	19.9	20.0	20.8	21.9	19.5	20.3	20.4	21.2	22.3
	3H	20.8	21.5	21.7	22.4	23.6	21.4	22.1	22.3	23.0	24.1
	4H	21.6	22.2	22.5	23.1	24.3	22.3	22.9	23.2	23.8	25.0
	6H	22.2	22.7	23.1	23.6	24.9	23.1	23.6	24.0	24.6	25.8
	8H	22.4	22.9	23.3	23.8	25.0	23.4	23.9	24.4	24.9	26.1
	12H	22.5	23.0	23.5	23.9	25.2	23.7	24.2	24.7	25.2	26.4
8H	4H	21.9	22.4	22.8	23.3	24.6	22.5	23.0	23.5	24.0	25.2
	6H	22.7	23.1	23.7	24.1	25.3	23.5	23.9	24.5	24.9	26.2
	8H	23.0	23.4	24.0	24.3	25.6	24.0	24.4	25.0	25.4	26.6
	12H	23.2	23.5	24.2	24.6	25.8	24.4	24.8	25.5	25.8	27.1
12H	4H	21.9	22.4	22.9	23.3	24.6	22.5	22.9	23.5	23.9	25.2
	6H	22.8	23.1	23.8	24.1	25.4	23.6	23.9	24.6	24.9	26.2
	8H	23.2	23.5	24.2	24.5	25.8	24.1	24.4	25.1	25.4	26.7
Variations with the observer position at spacings:											
S = 1.0H	+ 0.1 / - 0.1					+ 0.1 / - 0.2					
1.5H	+ 0.1 / - 0.2					+ 0.2 / - 0.3					
2.0H	+ 0.2 / - 0.2					+ 0.1 / - 0.4					

CIE Pub.117 Corrected 4924 lm Total Lamp Luminous Flux.(8log(F/F0) = 5.5)

C Range: 0 - 360DEG  
 C Interval: 5.0DEG  
 Test Speed: HIGH  
 Temperature:26.3DEG  
 Operators:Ethan  
 Test Date:2021-10-07

γ Range: 0 - 180DEG  
 γ Interval: 0.5DEG  
 Test System:EVERFINE GO-2000B\_V1 SYSTEM V2.0.268  
 Humidity:36%  
 Test Distance:6.770m [K=1.0000]  
 Remarks: E款 5:5  
 源磊A+档

## UTILIZATION FACTORS TABLE

Test:U:121.4V I:0.3230A P:38.80W PF:0.9890 Lamp Flux:4924.07x1 lm		
NAME: 二代线条灯	TYPE:白色外壳	WEIGHT:
DIM.: 4FT	SPEC.:3500K	SERIAL No.:认证样品
MFR.: YQ	SUR.:1.2*0.066m	PROTECTION ANGLE:

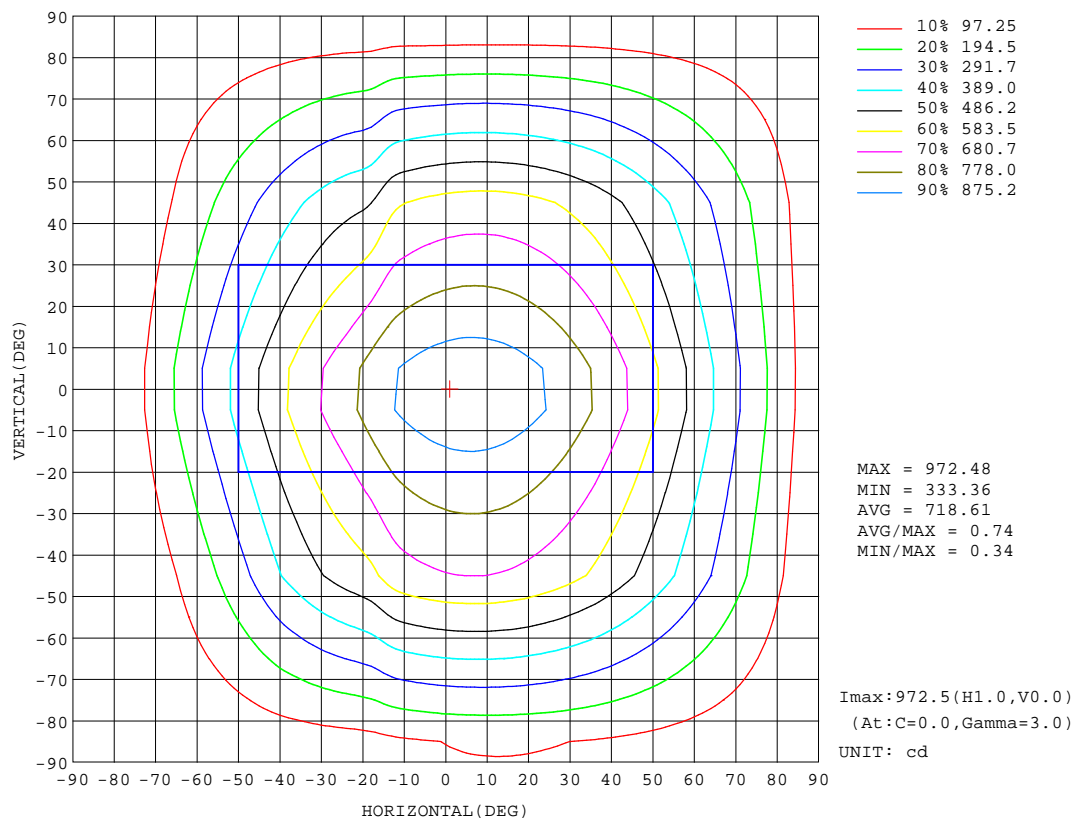
REFLECTANCE										
Ceiling	0.8	0.8	0.8	0.7	0.7	0.7	0.5	0.5	0.5	0
Walls	0.7	0.5	0.3	0.7	0.5	0.3	0.7	0.5	0.3	0
Working plane	0.2	0.2	0.2	0.2	0.2	0.2	0.2	0.2	0.2	0
ROOM INDEX	UTILIZATION FACTORS(PERCENT) $k(RI) \times RCR = 5$									
k = 0.60	44	33	27	42	32	26	38	29	24	17
0.80	54	42	35	51	40	34	45	37	31	21
1.00	62	50	43	58	47	41	51	44	37	26
1.25	68	57	50	64	54	47	56	48	43	29
1.50	74	63	55	69	59	53	60	53	47	32
2.00	81	71	64	75	67	61	65	59	54	36
2.50	85	77	70	79	72	66	68	63	58	38
3.00	89	81	75	82	76	70	71	66	62	41
4.00	93	87	81	86	81	76	74	70	67	43
5.00	96	90	86	89	84	80	76	73	70	45
ROOM INDEX	UF(total)									Direct
According to DIN EN 13032-2 2004			Suspended					SHRNOM = 1.25		

C Range: 0 - 360DEG  
 C Interval: 5.0DEG  
 Test Speed: HIGH  
 Temperature:26.3DEG  
 Operators:Ethan  
 Test Date:2021-10-07

γ Range: 0 - 180DEG  
 γ Interval: 0.5DEG  
 Test System:EVERFINE GO-2000B\_V1 SYSTEM V2.0.268  
 Humidity:36%  
 Test Distance:6.770m [K=1.0000]  
 Remarks: E款 5:5  
 源磊A+档

## ISOCANDELA DIAGRAM

Test:U:121.4V I:0.3230A P:38.80W PF:0.9890 Lamp Flux:4924.07x1 lm		
NAME: 二代线条灯	TYPE:白色外壳	WEIGHT:
DIM.: 4FT	SPEC.:3500K	SERIAL No.:认证样品
MFR.: YQ	SUR.:1.2*0.066m	PROTECTION ANGLE:

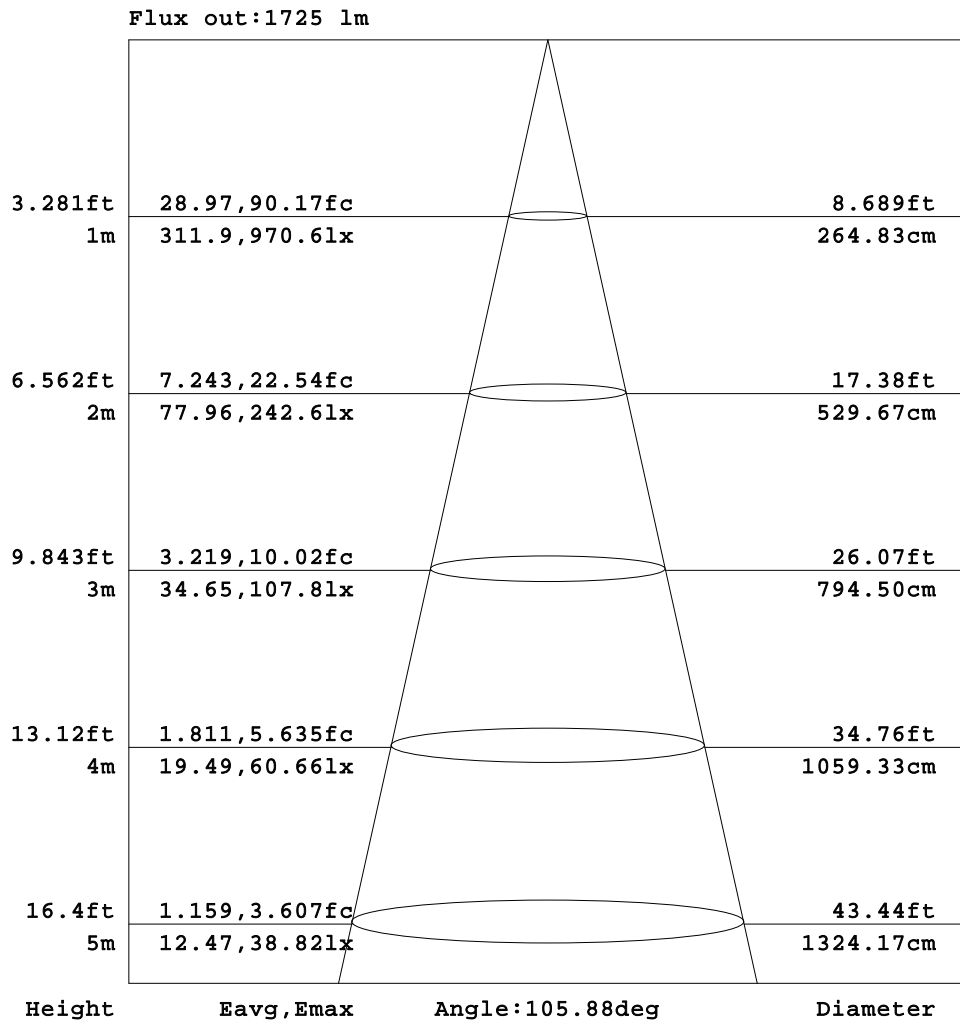


C Range: 0 - 360DEG  
C Interval: 5.0DEG  
Test Speed: HIGH  
Temperature: 26.3DEG  
Operators: Ethan  
Test Date: 2021-10-07

$\gamma$  Range: 0 - 180DEG  
 $\gamma$  Interval: 0.5DEG  
Test System: EVERFINE GO-2000B\_V1 SYSTEM V2.0.268  
Humidity: 36%  
Test Distance: 6.770m [K=1.0000]  
Remarks: E款 5:5  
源磊A+档

AAI Figure

Test:U:121.4V I:0.3230A P:38.80W PF:0.9890 Lamp Flux:4924.07x1 lm		
NAME: 二代线条灯	TYPE:白色外壳	WEIGHT:
DIM.: 4FT	SPEC.:3500K	SERIAL No.:认证样品
MFR.: YQ	SUR.:1.2*0.066m	PROTECTION ANGLE:



Note:The Curves indicate the illuminated area and the average illumination when the luminaire is at different distance.

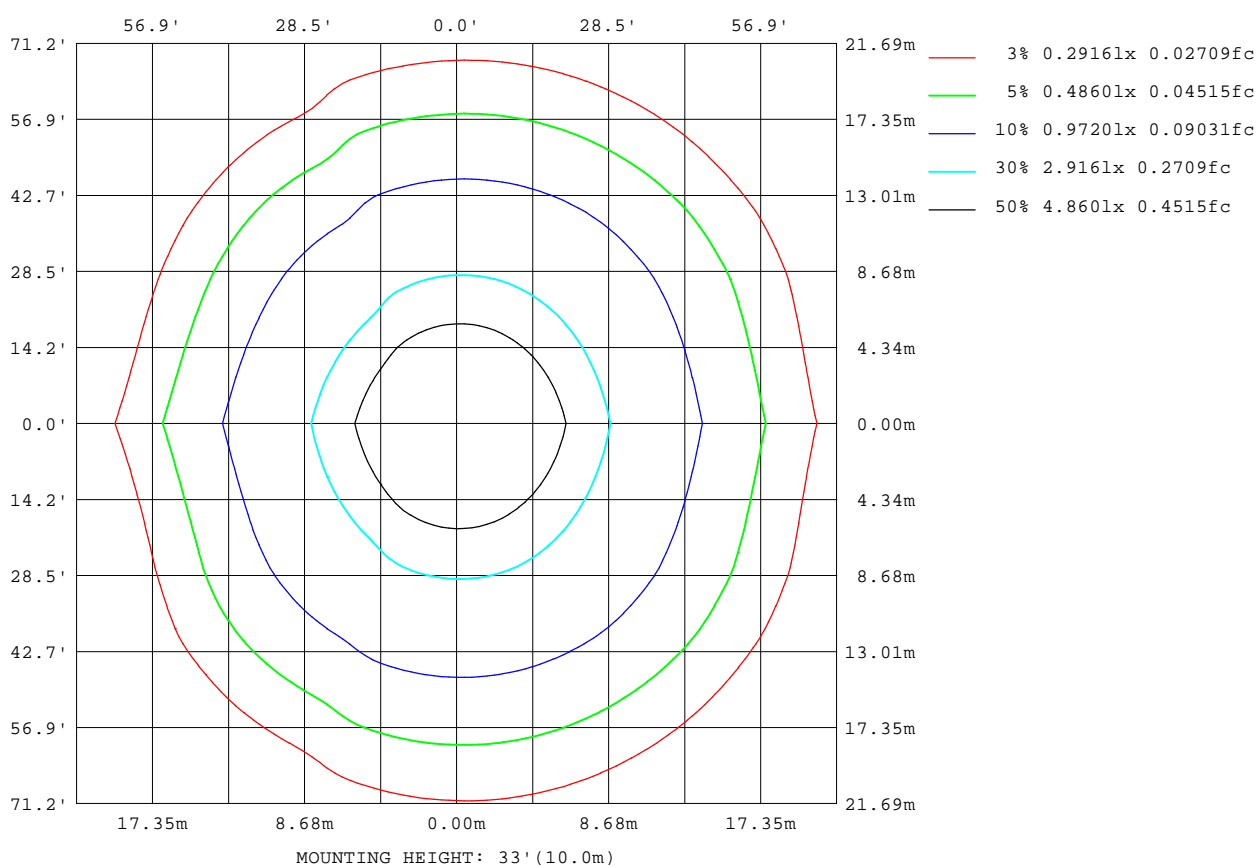
C Range: 0 - 360DEG  
C Interval: 5.0DEG  
Test Speed: HIGH  
Temperature:26.3DEG  
Operators:Ethan  
Test Date:2021-10-07

γ Range: 0 - 180DEG  
γ Interval: 0.5DEG  
Test System:EVERFINE GO-2000B\_V1 SYSTEM V2.0.268  
Humidity:36%  
Test Distance:6.770m [K=1.0000]  
Remarks: E款 5:5  
源磊A+档



## ISOLUX DIAGRAM

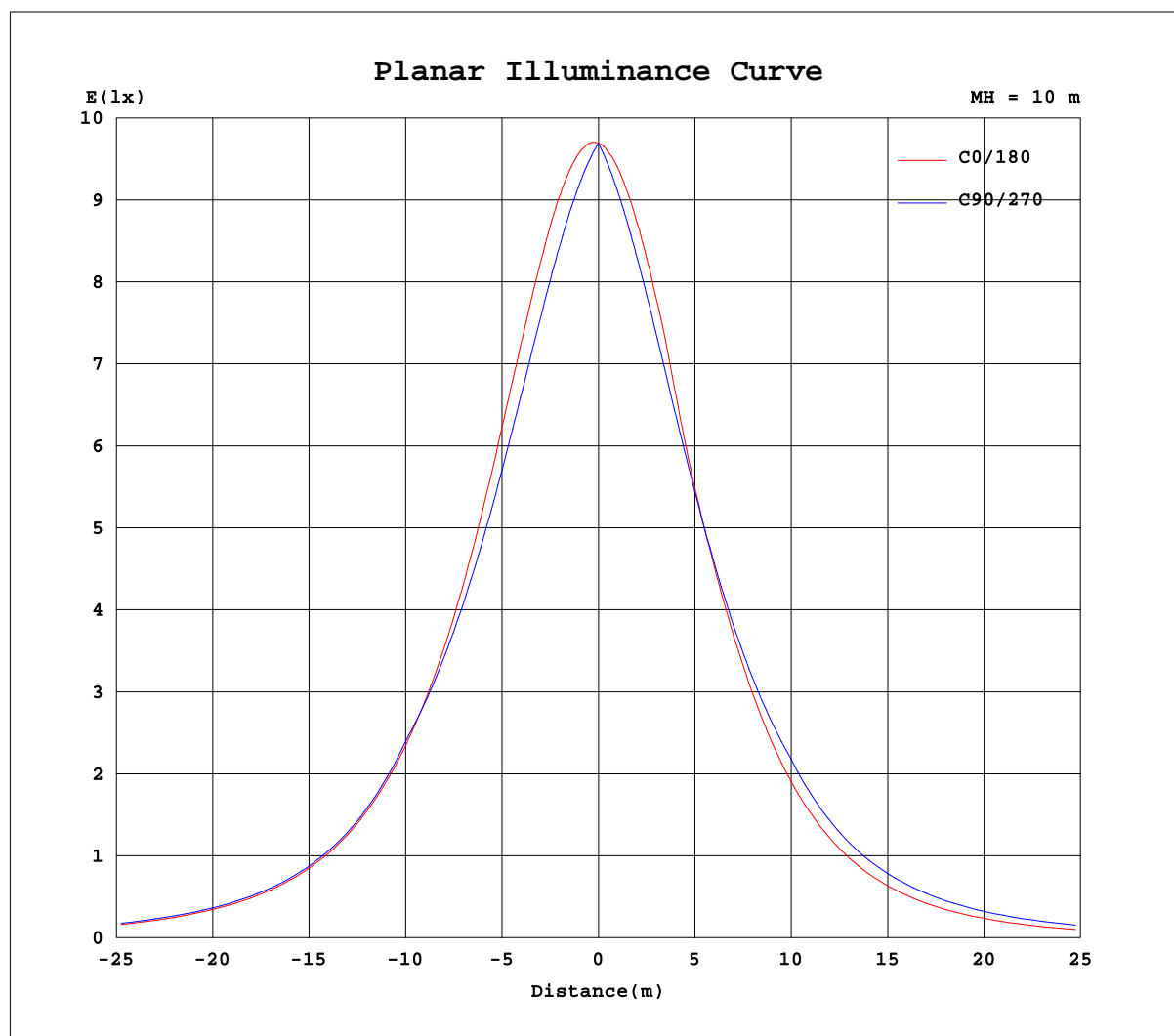
Test:U:121.4V I:0.3230A P:38.80W PF:0.9890 Lamp Flux:4924.07x1 lm		
NAME: 二代线条灯	TYPE:白色外壳	WEIGHT:
DIM.: 4FT	SPEC.:3500K	SERIAL No.:认证样品
MFR.: YQ	SUR.:1.2*0.066m	PROTECTION ANGLE:



C Range: 0 - 360DEG  
 C Interval: 5.0DEG  
 Test Speed: HIGH  
 Temperature: 26.3DEG  
 Operators: Ethan  
 Test Date: 2021-10-07

$\gamma$  Range: 0 - 180DEG  
 $\gamma$  Interval: 0.5DEG  
 Test System: EVERFINE GO-2000B\_V1 SYSTEM V2.0.268  
 Humidity: 36%  
 Test Distance: 6.770m [K=1.0000]  
 Remarks: E款 5:5  
 源磊A+档

## Planar Illuminance Curve



C Range: 0 - 360DEG  
C Interval: 5.0DEG  
Test Speed: HIGH  
Temperature: 26.3DEG  
Operators: Ethan  
Test Date: 2021-10-07

$\gamma$  Range: 0 - 180DEG  
 $\gamma$  Interval: 0.5DEG  
Test System: EVERFINE GO-2000B\_V1 SYSTEM V2.0.268  
Humidity: 36%  
Test Distance: 6.770m [K=1.0000]  
Remarks: E款 5:5  
源磊A+档

## LUMINOUS DISTRIBUTION INTENSITY DATA

Test:U:121.4V I:0.3230A P:38.80W PF:0.9890 Lamp Flux:4924.07x1 lm		
NAME: 二代线条灯	TYPE:白色外壳	WEIGHT:
DIM.: 4FT	SPEC.:3500K	SERIAL No.:认证样品
MFR.: YQ	SUR.:1.2*0.066m	PROTECTION ANGLE:

Table--1

UNIT: cd

C(DEG) γ (DEG)	0	5	10	15	20	25	30	35	40	45	50	55	60	65	70	75	80	85	90
0	969	969	969	969	969	969	969	969	969	969	969	969	969	969	969	969	969	969	969
5	973	970	967	964	961	959	956	954	951	950	948	946	944	943	941	940	939	938	937
10	965	959	954	949	944	939	935	931	928	924	922	919	916	914	912	910	908	906	905
15	947	939	931	924	918	912	907	903	899	895	891	888	886	883	881	879	877	874	872
20	919	909	900	891	884	878	873	868	864	861	858	856	853	851	849	847	845	843	840
25	884	871	860	851	843	837	832	828	825	823	821	820	819	818	817	815	813	811	808
30	839	824	812	803	795	790	786	784	783	782	783	783	783	784	783	782	781	779	776
35	786	770	758	748	742	738	736	736	738	739	742	744	747	748	749	750	749	746	743
40	728	710	698	689	684	682	683	685	689	694	699	704	709	712	715	716	716	714	711
45	664	645	633	625	622	623	627	633	640	648	656	664	671	677	681	683	683	682	679
50	594	575	563	557	557	562	569	579	591	602	613	624	626	623	621	618	615	611	606
55	519	500	490	487	490	499	511	525	540	554	552	551	550	548	547	545	542	538	534
60	443	424	415	416	424	436	453	471	472	473	474	474	474	474	473	471	469	466	462
65	365	347	341	346	358	376	387	389	391	394	397	398	399	399	399	398	396	393	389
70	287	270	269	279	296	302	305	308	312	316	320	323	324	325	326	325	323	321	317
75	209	195	200	216	219	223	227	232	237	242	246	249	251	252	252	252	250	248	245
80	134	124	137	140	144	149	154	160	164	169	173	176	178	179	179	179	177	175	172
85	63.2	60.8	65.5	71.2	76.2	81.0	85.6	90.0	94.1	97.7	101	104	105	106	107	106	105	103	99.8
90	7.10	6.87	9.01	11.4	14.0	16.8	19.6	22.4	25.1	27.6	29.9	31.7	33.0	33.7	33.7	33.1	31.9	30.2	27.4
95	1.06	1.49	10.8	27.4	37.9	46.3	53.2	59.4	65.0	70.1	74.6	78.5	81.7	84.2	85.8	86.7	86.8	86.3	84.8
100	30.4	25.5	36.2	54.1	67.8	79.8	89.7	98.5	107	114	120	126	131	135	138	140	142	142	142
105	91.5	80.6	83.6	93.9	108	120	131	141	151	159	167	174	181	186	191	194	197	199	199
110	156	141	138	145	155	167	177	188	198	208	216	225	232	239	244	249	252	255	257
115	223	206	199	201	208	219	230	240	249	259	268	277	284	292	298	303	308	311	314
120	292	273	264	261	265	272	283	296	304	313	322	331	338	346	353	359	364	368	371
125	362	343	331	325	325	330	337	347	359	371	379	387	394	401	408	414	420	424	429
130	432	412	398	391	388	390	394	402	411	421	432	443	451	458	465	471	476	481	486
135	500	480	466	457	452	451	453	457	464	472	480	490	499	508	517	524	531	538	543
140	566	547	533	522	516	512	512	514	518	523	530	537	545	552	559	566	572	577	583
145	628	610	596	585	578	573	572	571	573	576	580	585	590	596	601	607	612	617	622
150	688	671	658	647	639	632	629	627	627	628	630	633	636	640	644	649	653	657	662
155	740	726	714	704	695	689	684	682	680	679	679	680	682	684	688	691	694	697	701
160	788	776	766	757	749	742	737	733	730	728	727	726	727	729	730	732	735	737	740
165	827	817	809	802	795	789	784	780	777	775	773	773	772	772	773	774	775	778	780
170	859	852	846	841	836	832	828	825	822	819	818	817	816	815	815	815	817	818	819
175	883	880	877	874	871	868	866	864	862	860	859	858	857	857	857	857	858	858	859
180	898	898	898	898	898	898	898	898	898	898	898	898	898	898	898	898	898	898	898

C Range: 0 - 360DEG  
C Interval: 5.0DEG  
Test Speed: HIGH  
Temperature:26.3DEG  
Operators:Ethan  
Test Date:2021-10-07

γ Range: 0 - 180DEG  
γ Interval: 0.5DEG  
Test System:EVERFINE GO-2000B\_V1 SYSTEM V2.0.268  
Humidity:36%  
Test Distance:6.770m [K=1.0000]  
Remarks: E款 5:5  
源磊A+档

## LUMINOUS DISTRIBUTION INTENSITY DATA

Test:U:121.4V I:0.3230A P:38.80W PF:0.9890 Lamp Flux:4924.07x1 lm		
NAME: 二代线条灯	TYPE:白色外壳	WEIGHT:
DIM.: 4FT	SPEC.:3500K	SERIAL No.:认证样品
MFR.: YQ	SUR.:1.2*0.066m	PROTECTION ANGLE:

Table--2

UNIT: cd

C(°) γ (°)	95	100	105	110	115	120	125	130	135	140	145	150	155	160	165	170	175	180	185
0	969	969	969	969	969	969	969	969	969	969	969	969	969	969	969	969	969	969	969
5	936	936	936	936	936	936	936	937	938	940	941	943	945	947	949	951	954	957	953
10	904	903	902	901	901	901	902	902	903	904	906	909	912	915	919	924	928	934	927
15	871	869	867	866	865	864	863	863	864	865	867	869	872	876	881	887	894	902	892
20	838	835	833	830	827	825	823	822	820	819	817	818	820	823	828	835	844	854	840
25	805	801	797	793	789	786	780	773	765	759	754	752	752	754	758	765	774	786	770
30	772	767	762	757	751	742	728	714	703	696	691	688	689	692	698	706	717	731	713
35	739	733	727	720	710	691	669	656	647	640	635	633	632	634	638	646	658	673	653
40	706	700	692	683	664	634	617	606	596	588	581	575	571	571	573	581	592	609	588
45	673	666	657	644	612	584	571	560	548	536	525	514	507	503	503	509	521	539	517
50	602	596	591	578	546	535	529	515	500	482	466	453	439	430	428	433	446	467	445
55	529	523	517	499	470	465	462	456	449	429	408	385	367	355	352	357	371	394	371
60	457	451	444	421	400	396	391	384	374	364	345	317	296	282	277	281	294	319	296
65	384	378	370	346	332	327	322	313	303	288	268	249	228	213	206	208	220	244	223
70	312	306	298	274	264	261	255	246	236	219	200	182	164	149	140	139	148	171	151
75	240	234	225	206	198	195	189	182	172	157	141	126	111	95.9	82.6	80.3	83.7	99.3	83.3
80	168	162	153	138	132	130	125	120	112	101	89.9	78.8	67.9	56.6	45.7	31.3	27.7	34.1	25.9
85	95.5	89.9	82.6	71.7	67.1	65.6	62.9	59.8	55.4	49.6	44.3	39.0	33.8	28.2	22.2	11.8	2.92	2.93	3.28
90	23.5	18.2	12.1	5.77	2.15	1.89	1.14	0.74	0.74	0.83	1.51	2.67	4.16	5.97	7.91	10.9	14.7	13.8	27.5
95	82.0	77.9	72.7	61.5	59.2	59.7	59.1	59.3	59.4	59.5	60.6	62.1	64.4	67.0	71.0	76.5	89.2	101	71.1
100	140	138	134	118	116	118	117	118	118	119	120	123	126	130	137	147	145	160	121
105	199	197	195	175	173	176	175	178	178	179	181	185	189	196	204	201	206	218	182
110	257	257	256	233	230	234	234	237	238	241	243	249	255	261	258	259	269	298	254
115	316	317	317	294	286	291	294	297	301	303	308	314	316	312	313	319	333	364	324
120	374	376	378	360	342	349	355	356	363	367	374	369	368	368	371	379	395	428	392
125	432	435	438	429	399	406	414	418	424	425	422	421	420	425	432	443	460	493	462
130	490	495	498	499	462	462	470	472	470	472	474	474	475	480	489	504	523	553	527
135	548	552	554	556	530	509	515	516	519	519	523	528	534	540	549	562	579	608	585
140	587	591	594	597	591	564	561	565	564	568	572	578	586	596	609	624	643	672	649
145	626	630	634	637	639	628	612	614	618	618	621	629	637	648	661	676	695	722	702
150	665	669	673	676	680	683	676	667	669	676	680	682	687	697	709	723	740	765	747
155	705	708	712	716	719	724	728	729	726	727	733	743	753	762	771	782	796	822	806
160	744	747	751	754	758	762	767	772	778	783	787	793	800	810	821	834	848	868	854
165	783	785	788	792	795	800	804	809	814	820	826	833	841	848	857	866	876	890	880
170	821	823	826	828	831	835	838	842	847	852	857	862	868	873	879	886	892	902	896
175	860	861	862	864	866	868	870	872	875	877	880	883	887	890	893	897	900	905	902
180	898	898	898	898	898	898	898	898	898	898	898	898	898	898	898	898	898	899	899

C Range: 0 - 360DEG  
 C Interval: 5.0DEG  
 Test Speed: HIGH  
 Temperature: 26.3DEG  
 Operators: Ethan  
 Test Date: 2021-10-07

γ Range: 0 - 180DEG  
 γ Interval: 0.5DEG  
 Test System: EVERFINE GO-2000B\_V1 SYSTEM V2.0.268  
 Humidity: 36%  
 Test Distance: 6.770m [K=1.0000]  
 Remarks: E款 5:5  
 源磊A+档

## LUMINOUS DISTRIBUTION INTENSITY DATA

Test:U:121.4V I:0.3230A P:38.80W PF:0.9890 Lamp Flux:4924.07x1 lm		
NAME: 二代线条灯	TYPE:白色外壳	WEIGHT:
DIM.: 4FT	SPEC.:3500K	SERIAL No.:认证样品
MFR.: YQ	SUR.:1.2*0.066m	PROTECTION ANGLE:

Table--3

UNIT: cd

C(°) \ γ (°)	190	195	200	205	210	215	220	225	230	235	240	245	250	255	260	265	270	275	280
0	969	969	969	969	969	969	969	969	969	969	969	969	969	969	969	969	969	969	969
5	950	947	944	942	939	937	935	933	932	931	930	930	929	929	929	930	930	931	932
10	921	915	910	906	902	898	895	893	891	890	889	888	888	888	889	890	891	892	895
15	883	875	869	863	858	855	851	848	847	846	845	846	846	847	848	850	852	854	857
20	829	819	811	806	802	800	800	800	800	800	800	801	803	805	807	810	812	816	818
25	757	747	739	733	730	728	731	737	745	752	755	757	760	763	767	770	773	777	780
30	698	685	675	668	663	661	661	664	674	691	706	712	716	721	726	730	734	738	741
35	637	625	615	609	605	602	602	603	607	618	644	666	672	679	685	690	695	699	703
40	571	560	552	547	545	545	547	549	553	557	574	610	629	637	644	650	655	660	664
45	501	491	484	483	484	487	492	497	502	506	512	547	585	594	603	610	616	621	625
50	429	420	416	417	421	428	436	445	453	460	460	473	519	532	538	543	548	553	559
55	356	349	348	352	360	370	382	393	398	401	402	405	444	464	470	474	479	484	489
60	284	280	282	289	300	314	322	330	336	341	344	344	372	397	402	406	411	416	420
65	213	213	219	230	242	251	262	270	277	283	286	287	303	331	335	339	343	347	350
70	146	150	160	172	184	194	204	213	220	226	230	231	239	264	268	271	274	278	281
75	82.8	92.2	108	122	133	143	151	159	165	170	174	175	178	198	202	203	206	208	211
80	28.7	51.4	68.0	79.5	88.8	96.4	103	108	113	116	118	119	120	133	136	136	138	139	141
85	15.7	30.0	39.7	45.4	49.9	53.8	56.6	59.2	61.3	63.0	63.4	63.7	63.3	68.8	69.6	68.3	69.1	70.1	71.3
90	25.0	22.1	18.8	15.6	13.9	13.2	12.2	11.4	10.8	10.3	8.92	8.38	6.68	4.68	3.55	0.83	0.74	0.85	1.43
95	59.8	55.2	55.3	56.6	59.5	63.0	67.9	68.5	67.7	68.8	67.8	66.2	68.2	70.0	68.5	65.4	64.6	63.8	63.1
100	97.1	91.9	96.1	101	107	116	126	124	125	128	127	124	131	135	133	130	128	127	125
105	156	142	145	154	161	174	188	179	183	187	186	181	195	200	198	195	192	190	187
110	226	210	208	211	223	239	250	238	243	247	245	239	261	266	263	259	256	253	249
115	296	281	274	280	297	315	301	302	307	308	303	299	330	331	328	324	320	316	311
120	366	351	347	354	372	378	362	365	372	368	361	364	399	396	392	388	384	379	374
125	439	426	421	426	425	415	424	435	434	428	417	438	465	462	457	452	447	443	437
130	507	494	487	475	472	474	480	486	487	484	480	519	531	527	522	517	511	506	500
135	566	551	542	536	531	532	533	532	529	526	545	584	587	586	584	580	575	569	561
140	630	614	602	595	590	585	580	577	576	583	613	625	624	622	620	616	611	605	599
145	685	670	658	648	639	632	629	629	633	652	665	663	661	659	655	652	647	642	636
150	731	717	706	697	693	690	688	691	701	706	704	701	698	695	691	687	683	678	674
155	792	781	771	762	755	751	751	752	749	745	741	737	734	730	727	723	719	715	711
160	842	831	822	815	809	802	796	791	786	781	777	773	769	765	762	758	755	752	749
165	872	863	856	849	842	836	830	824	819	815	811	807	803	800	797	794	791	789	786
170	890	884	878	873	868	863	858	854	850	846	842	839	837	834	831	829	827	825	824
175	899	896	893	890	887	884	882	879	877	874	872	870	868	867	866	864	863	862	862
180	899	899	899	899	899	899	899	899	899	899	899	899	899	899	899	899	899	899	899

C Range: 0 - 360DEG  
C Interval: 5.0DEG  
Test Speed: HIGH  
Temperature: 26.3DEG  
Operators: Ethan  
Test Date: 2021-10-07

γ Range: 0 - 180DEG  
γ Interval: 0.5DEG  
Test System: EVERFINE GO-2000B\_V1 SYSTEM V2.0.268  
Humidity: 36%  
Test Distance: 6.770m [K=1.0000]  
Remarks: E款 5:5  
源磊A+档

## LUMINOUS DISTRIBUTION INTENSITY DATA

Test:U:121.4V I:0.3230A P:38.80W PF:0.9890 Lamp Flux:4924.07x1 lm		
NAME: 二代线条灯	TYPE:白色外壳	WEIGHT:
DIM.: 4FT	SPEC.:3500K	SERIAL No.:认证样品
MFR.: YQ	SUR.:1.2*0.066m	PROTECTION ANGLE:

Table--4

UNIT: cd

C(°) γ (°)	285	290	295	300	305	310	315	320	325	330	335	340	345	350	355				
0	969	969	969	969	969	969	969	969	969	969	969	969	969	969	969				
5	933	935	937	939	941	943	945	947	950	953	956	959	962	966	969				
10	897	899	901	905	908	911	915	919	924	929	934	939	945	952	958				
15	859	862	865	869	872	877	881	886	892	898	904	912	919	928	937				
20	821	824	827	831	835	839	843	848	854	861	868	876	885	896	907				
25	783	786	789	792	795	798	802	807	812	818	825	834	844	855	869				
30	744	747	749	751	753	756	758	762	766	771	777	785	795	807	822				
35	705	708	709	710	711	712	713	714	716	719	724	731	740	752	768				
40	667	668	669	668	668	666	665	664	664	665	668	672	681	692	708				
45	628	628	628	627	624	621	617	614	611	609	608	611	617	628	643				
50	564	569	574	579	581	575	570	563	557	551	548	547	550	558	573				
55	494	498	502	507	511	516	521	513	502	493	486	481	481	486	499				
60	424	428	431	434	437	441	444	447	449	436	425	416	412	413	423				
65	353	357	360	362	365	367	368	369	371	374	367	354	344	341	347				
70	283	286	288	290	292	294	294	294	295	295	297	295	280	271	271				
75	213	215	217	219	221	222	222	221	221	221	220	221	221	206	199				
80	143	145	147	148	150	151	151	151	151	150	149	148	148	149	132				
85	72.6	74.3	76.1	77.9	79.7	80.9	82.0	82.8	83.3	83.5	83.3	82.6	81.5	79.5	76.8				
90	2.36	3.86	5.64	7.52	9.53	11.5	13.4	15.1	16.8	18.5	19.9	21.2	22.4	23.4	24.3				
95	62.6	62.4	62.2	61.8	61.3	60.4	59.2	57.3	54.9	51.5	46.8	39.7	28.7	11.4	2.83				
100	123	121	119	117	114	110	106	101	94.9	87.5	78.3	65.3	48.5	23.3	17.9				
105	184	180	176	172	167	161	155	147	139	129	117	102	85.5	74.4	72.1				
110	245	240	235	229	222	215	207	198	188	177	165	151	138	131	133				
115	306	300	294	287	280	271	263	253	243	232	219	205	196	193	199				
120	368	362	355	347	340	331	322	313	303	287	274	263	258	259	267				
125	431	424	417	409	401	393	385	370	355	342	332	325	323	326	337				
130	494	487	481	473	463	449	435	421	410	400	392	388	389	395	407				
135	553	543	532	520	508	496	485	474	465	458	454	453	456	463	476				
140	591	582	573	564	554	545	536	528	522	517	516	517	522	530	543				
145	629	622	615	608	600	594	587	582	578	576	577	579	585	594	607				
150	668	663	657	651	647	642	639	635	634	634	636	640	647	656	668				
155	707	703	699	695	692	690	688	687	688	689	692	697	704	713	724				
160	746	742	740	738	736	736	735	736	738	741	745	750	756	765	774				
165	784	783	781	780	780	780	781	782	784	788	792	796	802	809	816				
170	823	822	822	822	822	822	823	825	827	830	834	838	842	847	852				
175	861	861	861	861	861	862	863	864	866	868	870	872	875	877	880				
180	899	899	899	899	899	899	899	899	899	899	899	899	899	899	899				

C Range: 0 - 360DEG  
C Interval: 5.0DEG  
Test Speed: HIGH  
Temperature:26.3DEG  
Operators:Ethan  
Test Date:2021-10-07

γ Range: 0 - 180DEG  
γ Interval: 0.5DEG  
Test System:EVERFINE GO-2000B\_V1 SYSTEM V2.0.268  
Humidity:36%  
Test Distance:6.770m [K=1.0000]  
Remarks: E款 5:5  
源磊A+档